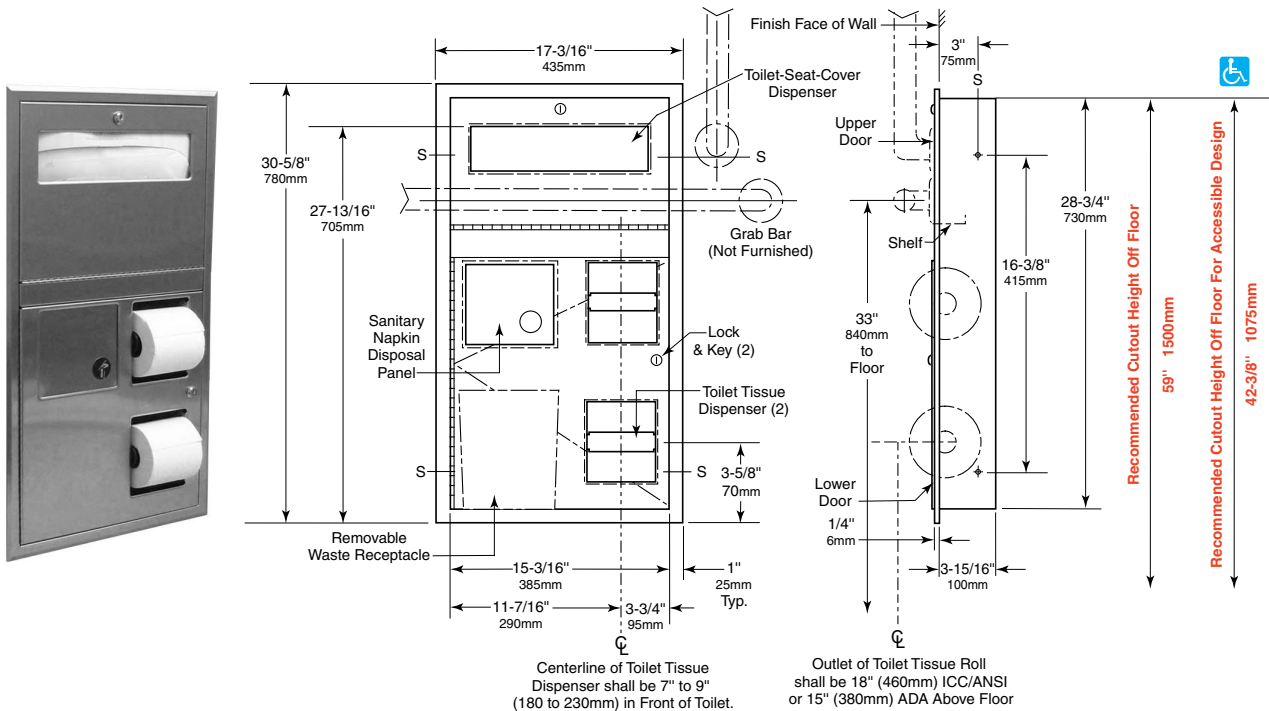


Specify Model Required:  TSC-5FS with 4" skirt for surface-mounting.



**Rough Wall Opening**  
16" (405mm) wide  
29-1/4" (745mm) high  
4" (102mm) minimum  
recessed depth

**MATERIALS:**

**Cabinet** — 18-8, type-304, heavy-gauge stainless steel. All-welded construction. Exposed surfaces have satin finish.

**Flange** — 18-8, type-304, 22-gauge (0.8mm) stainless steel with satin finish. One-piece, seamless construction with 1/4" (6mm) return for rigidity.

**Doors** — 18-8, type-304, 18-gauge (1.2mm) stainless steel with satin finish. One-piece, seamless construction. Secured to cabinet with a full-length stainless steel piano-hinge. Equipped with a tumbler lock keyed like other Gamco restroom accessories.

**Toilet Tissue Dispensers (2)** — .100" (2.5mm) thick ABS. Equipped with two theft-resistant, heavy-duty, one-piece molded ABS spindles.

**Disposal Panel** — 18-8, type-304, 22-gauge (0.8mm) stainless steel with hemmed edges; exposed surface has satin finish. Secured to door with a spring-loaded, full-length stainless steel piano-hinge. Equipped with an international graphic symbol identifying napkin disposal.

**Waste Receptacle** — Leak-proof molded polyethylene. Removable for servicing. Capacity: 0.8-gal. (3.0-L).

continued . . .

**OPERATION:**

Doors unlock with key provided and swing open for filling. Toilet-seat-cover dispenser holds 500 single- or half-fold paper covers. Spindles may be removed from cabinet only when door is open. Receptacle is removable for servicing. Unit holds two standard-core toilet tissue rolls up to 5-1/4" (135mm) diameter (1800 sheets).

**INSTALLATION:**

Provide framed rough wall opening 16" wide x 29-1/4" high (405 x 745mm). Minimum recessed depth required from finish face of wall is 4" (102mm). Top of wall opening should be 43-1/2" (1105mm) from finish face of floor to allow placement of horizontal grab bar at 33" (840mm) height across front of unit. Allow clearance for construction features that may protrude into rough wall opening from opposite wall. Coordinate with mechanical engineer to avoid pipes, vents, and conduits in wall. If unit projects above top of wainscot, provide aluminum channel or other filler to eliminate gap between flange and finish face of wall. Mount unit in wall opening with shims between framing and cabinet at all points indicated by an S, then secure unit with #8 x 1-1/4" (4.2 x 32mm) sheet-metal screws (not furnished).

**SPECIFICATION:**

Recessed toilet-seat-cover dispenser, sanitary napkin disposal, and toilet tissue dispenser shall be type-304 stainless steel with all-welded construction; exposed surfaces shall have satin finish. Toilet tissue dispensers shall be ABS plastic. Flange shall be one-piece, seamless construction with 1/4" (6mm) return for rigidity. Unit shall mount flush against side wall of barrier-free toilet compartment to allow clearance for grab bar across front of unit. Doors shall be one-piece, seamless construction; secured to cabinet with a full-length stainless steel piano-hinge; and equipped with a tumbler lock keyed like other Gamco restroom accessories. Toilet-seat-cover dispenser holds 500 paper covers. Self-closing disposal panel shall be secured to door with a spring-loaded, full-length stainless steel piano-hinge, has hemmed edges and equipped with an international graphic symbol identifying napkin disposal. Sanitary napkin disposal shall be furnished with a removable, leak-proof, molded polyethylene receptacle with a capacity of 0.8-gal. (3.0-L). Unit shall be equipped with two theft-resistant, heavy-duty, one-piece molded ABS toilet tissue spindles that hold standard-core rolls up to 5-1/4" (135mm) diameter (1800 sheets). Spindles shall be removable from cabinet only when door is open.

**Recessed Toilet Seat-Cover Dispenser, Toilet Tissue Dispenser and Napkin Disposal shall be \_\_\_\_\_  
(insert model number) of Gamco Commercial Restroom Accessories, One Gamco Place, Durant, OK,  
74701-1910**